

# CHOBE PRINCESS

AFRICAN RIVER SAFARI

BY MANTIS

## INFORMATION PACK



### A RELAXED INTIMATE RIVER SAFARI

Drifting along the majestic Chobe River, our three Chobe Princess houseboats offer supreme comfort, in one of the world's most remote locations. Enjoy our all-inclusive African river experience as you witness extraordinary wildlife scenes and immerse yourself in a truly intimate river safari.

With a limited number of guests on each boat, staying on one of the Chobe Princesses is like having your own houseboat. For a more exclusive experience, you can book the entire boat, transforming it into your private villa on the water. Two Chobe Princess houseboats feature four cabins each: three standard and one superior cabin. The third Chobe Princess is larger, boasting five cabins: four standard cabins and one superior cabin located on the upper deck. These houseboats can traverse up to 50km of the Chobe River, offering an expansive and varied exploration of this stunning waterway.

The Chobe Princess sails on scheduled weekly departures every Monday (two nights), Wednesday (two nights) and Friday (three nights).

### BEST TIME TO TRAVEL

There is no best or worst time to visit the Chobe area, because every month offers visitors something special. If you're looking for a pure wildlife experience, the drier winter months from May to October see greater concentrations of game along the banks of the Chobe River. The summer months from November to April see the birdlife explode with the addition of the summer migrants to the area. If you're a fishing enthusiast, you'll be excited to know that we have excellent fishing through the summer and winter – it's just that the techniques we use change.

## ACCOMMODATION

Two of our Chobe Princess houseboats have four cabins each: three Standard and one Superior Cabin. The third Princess is larger with five cabins: four Standard Cabins and one Superior Cabin, which is located on the upper (top) deck.

All houseboats are equipped with:

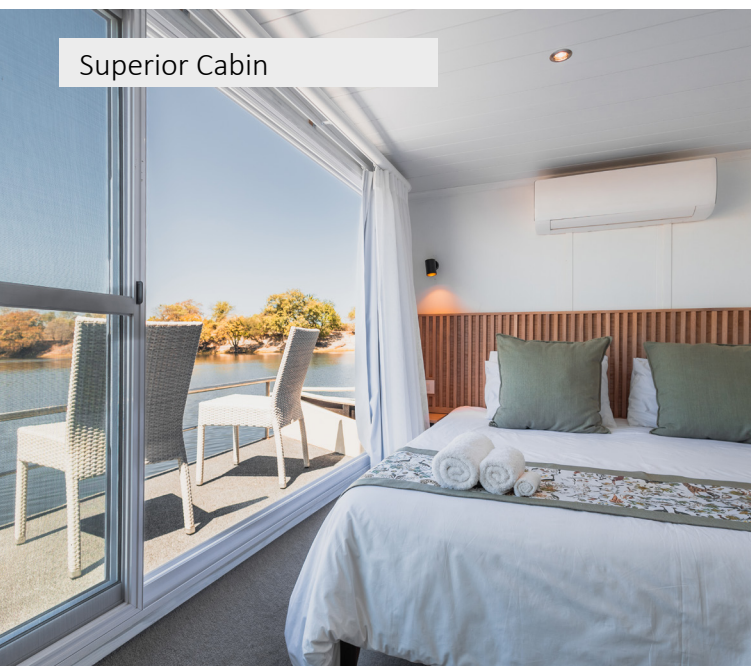
- Air-conditioning
- Large sliding windows (standard cabins)
- Private balconies (superior cabins)
- En suite bathroom (shower only)
- Electronic safe
- Hairdryer (available on request)

## CHILDREN & FAMILIES

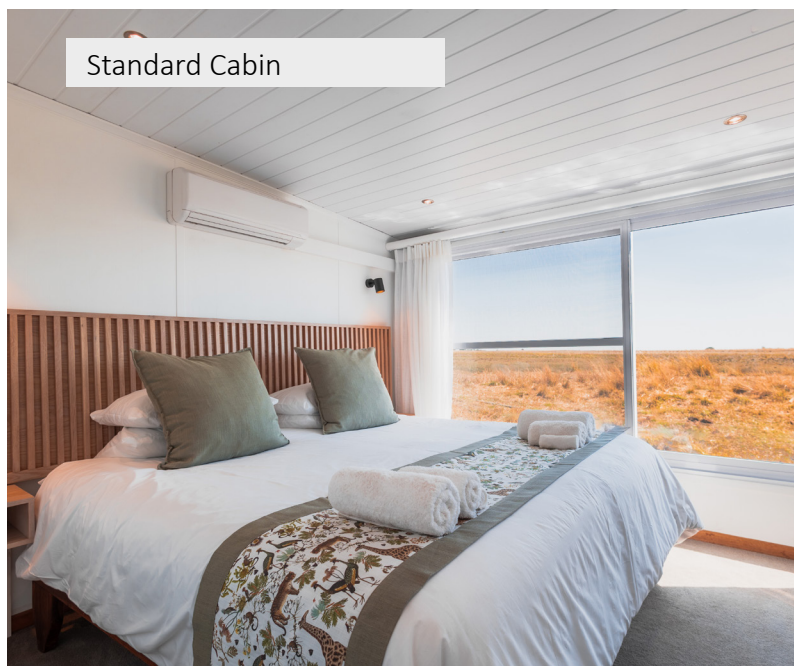
Experience the magic of an African family holiday and allow your kids imagination to run free. The Chobe Princesses welcomes children age 7 upwards. Children aged between 7 to 12 will receive a 50% discount on the applicable adult rate and a 30% single supplement applies to single children. Children aged 13 and older are considered adults and will be charged the applicable adult rate. Only one child between the ages of 7 and 12 can share a cabin with two adults. This is limited to one cabin per night per houseboat and is subject to availability at time of booking. Please note that no babysitting services, separate activities and/or menus are available for children.

Our houseboat is perfect for hosting special occasions from weddings, birthdays, anniversaries and more. Please let us know if we can assist you and your guests with any special arrangements to facilitate your celebration and create memorable moments. Please note all ages are permitted if you book the boat on exclusive use basis.

Superior Cabin



Standard Cabin



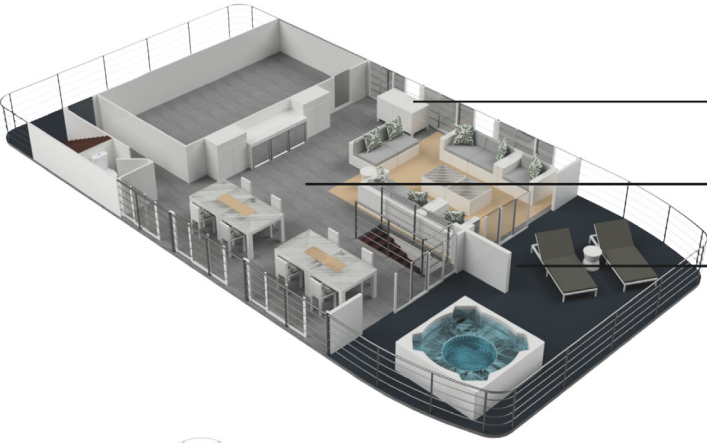
# CHOBE PRINCESS 1 DECK PLAN



Skipper's Bridge

## UPPER DECK

---



Lounge

Dining Room

Pool Deck

## MIDDLE DECK

---

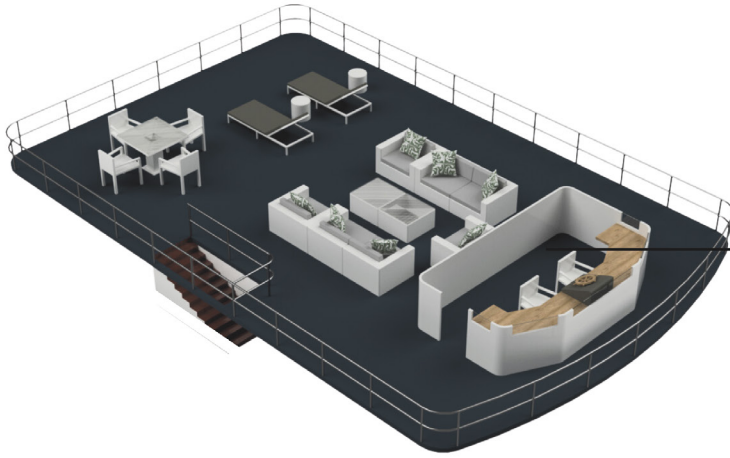


● Cabin

## LOWER DECK

---

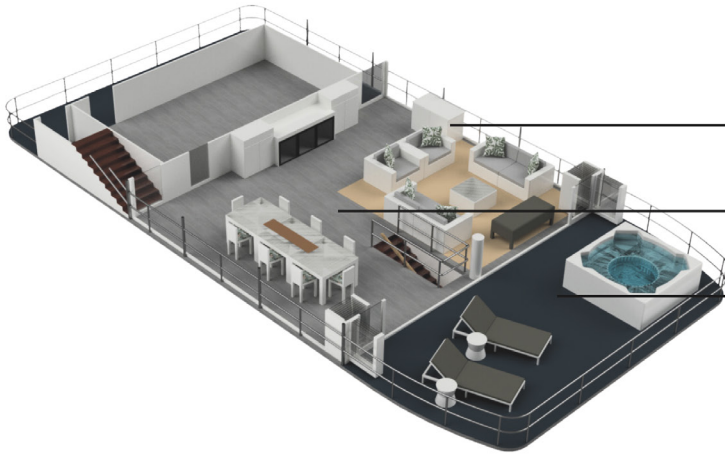
# CHOBE PRINCESS 2 DECK PLAN



Skipper's Bridge

## UPPER DECK

---



Lounge

Dining Room

Pool Deck

## MIDDLE DECK

---

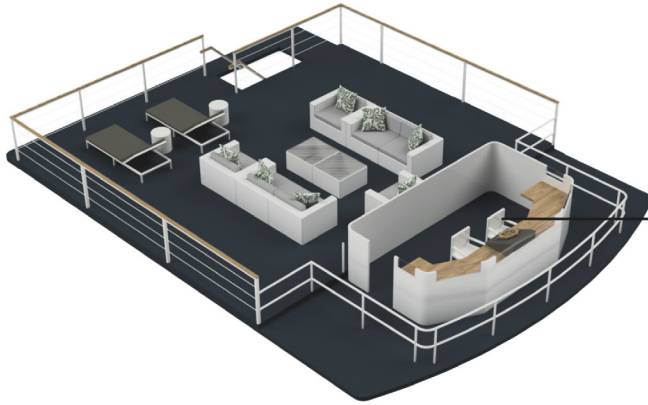


● Cabin

## LOWER DECK

---

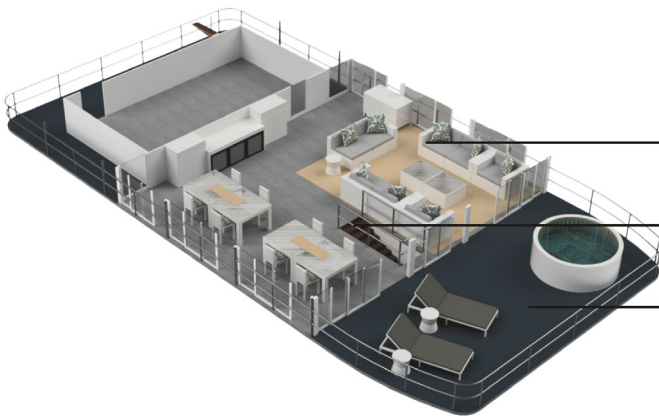
# CHOBE PRINCESS 3 DECK PLAN



Skipper's Bridge

## UPPER DECK

---



Lounge

Dining Room

Pool Deck

## MIDDLE DECK

---



Cabin

## LOWER DECK

---

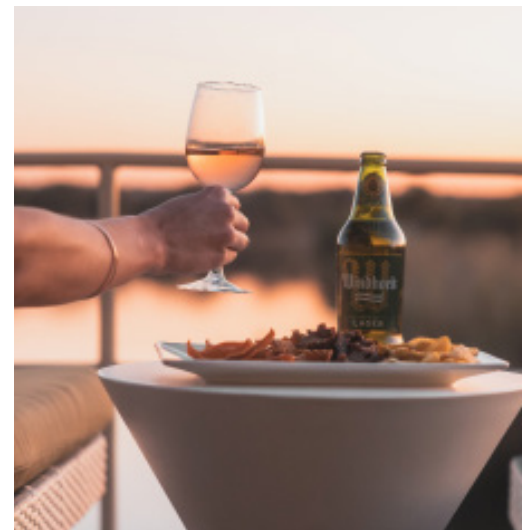
## RATES INCLUDE

- Accommodation
- All meals, soft drinks, mineral water, coffee, tea, local beer and wine
- Guided water based game viewing and birding
- Guided water-based fishing (all fishing is strictly catch and release)\*
- Guided (non-professional) water based photographic safari \*\*
- Guided cultural tour of a local village
- Road transfers to and from Kasane International Airport and Kasane Immigration Office located on the Botswana side of the Chobe River \*\*\*
- Boat transfers between Kasane Immigration Office and Namibia Immigration Office located on the Namibian side of the Chobe River \*\*\*

\*\*Subject to availability of fishing boats. Please note fishing excursions are limited to 1 tank of fuel per boat per day

\*\* Subject to availability of photographic boat

\*\*\* When arriving at the Kasane and Namibian Immigration Offices guests need to fill in the required immigration forms to gain access and departure permission from the relevant authorities. This process can take between 45 and 60 minutes to complete and needs to be considered in terms of pre- planning.



## RATES EXCLUDE

- Air tickets and visa fees
- Premium alcoholic beverages (such as sparkling wine, spirits & dessert wines)
- Curio shop purchases and gratuities (discretionary)
- A community development levy which will reflect as a separate line item on all invoices issued. The funds collected will supplement our community projects and initiatives run by the Zambezi Queen Collection to assist our local communities with education, health care and basic community services

## GETTING THERE

The Chobe Princess houseboats are located on the Namibian side of the Chobe River and moor in various locations along the river. If you're on a self-drive safari, secure parking can be arranged for your vehicle in Kasane. Please advise at time of booking whether you require secure parking.

If you are flying there are four main access points by air:

- Kasane International Airport, Botswana (BBK) is about 15 minutes from the Kasane Immigration Office
- Victoria Falls Airport, Zimbabwe (VFA) is about 1 ½ hours from the Kasane Immigration Office
- Livingstone Airport, Zambia (LVI) is about 2 hours from the Kasane Immigration Office
- Katima Mulilo Airport, Namibia (MPA) is about 2 ½ hours from the Botswana Immigration Office



## ON ARRIVAL & DEPARTURE

On arrival at the Kasane Immigration Office in Botswana a Chobe Princess staff member will meet you and assist you in the formalities at passport control exiting Botswana and load your luggage into a tender boat. From here you will travel by tender boat across the Chobe River to the Namibian Immigration Office. Guests are advised to wear comfortable shoes, a hat and sunscreen as there is a short walk to the immigration office. This process can take between 45 and 60 minutes based on the amount of people entering and exiting the immigration offices. Once you are stamped into Namibia you will be transferred to your Chobe Princess houseboat.

Both the Kasane and Namibia Immigration Offices open at 07h30 and close at 16h30 daily, you must get there no later than 16h00 to have time to check-in.

- Should guests know beforehand that they'll arrive at the Kasane Immigration Office before 13h00 on the day of their arrival, please notify our reservations office 48 hours before arrival, so we can make arrangements for your waiting period. Collection is from 13h00 on day of arrival
- Drop off is from 08h30 on day of departure

## AT A GLANCE

Cabins	Chobe Princess 1: 5 cabins (1 superior, 4 standard), Chobe Princess 2 & 3 (1 superior, 3 standard)
King-sized bed convertible to twin	Yes
Triple cabins	1 (limited to 2 adults and 1 child)
En-suite bathroom	Yes (shower only)
Children	Yes (7 years and older)
Single traveller supplement	Yes, 30% supplement
Public plunge pool	Yes (upper deck)
Air-conditioning	Yes
Room fans	Yes
In room safe	Yes
Hairdryer	Yes (on request)
Laundry	Yes (on request at an additional charge)
Disabled guest	No
Wi-Fi	Yes, intermittent connection (limited mobile and roaming connection)
Special dietary requirements and allergies	Yes, with prior notice. Unfortunately this also means that we're not able to cater on-site for Halaal and Kosher guests but can arrange for meals to be pre-ordered given advance warning.
Communal bar	Yes (upper deck)
Communal lounge	Yes (upper deck)
Flights & airport	Kasane International Airport is the closest airport 15 minutes by road from the Chobe River. Victoria Falls and Livingstone International Airport are 1.5- 2 hours by road from Kasane. Flights depart daily from Johannesburg and Cape Town into Kasane, Victoria Falls and Livingstone. Please note flights are excluded from our rates
Airport transfers	Road transfers to and from Kasane International Airport as well as to and from the Kasane Immigration Office are included in our rate. You can also choose shared or private road transfers at an additional cost from Victoria Falls International Airport, Livingstone Airport, and Katima Mulilo Airport.
Set departures	The Chobe Princesses sail on scheduled weekly departures every Monday (two-nights), Wednesday (two-nights) and Friday (three-nights).
Sailing information	The Chobe Princesses traverse up to 50km of the Chobe River. Please note that sailing is dependent on weather conditions, water levels and operational factors.
Conservation/entrance fees	No
Gratuuity recommendation	At your own discretion
Power	220v AC in Cabins. Three-pronged and two pronged South African plugs.
Payment information	We accept the Namibian Dollar, South African Rand, Botswana Pula and US Dollar. MasterCard and Visa cards are accepted but Amex and Diners Club cards are not accepted
Dress code	Casual



## KASANE IMMIGRATION OFFICE ADDRESS

Regional Immigration Office Kasane, Botswana  
GPS co-ordinates are S 17° 46' 48" / E 025° 11' 23".

## EMERGENCY CONTACT

Zambezi Queen Collection Operations:	00267 713 48435 / 00267 713 48437
Zambezi Queen Collection Cape Town Emergency Mobile:	0027 83 431 7399
Zambezi Queen Collection Cape Town Reservations Office:	0027 21 715 2412